

Monthly PAX Trends Snapshot

JUN 2013



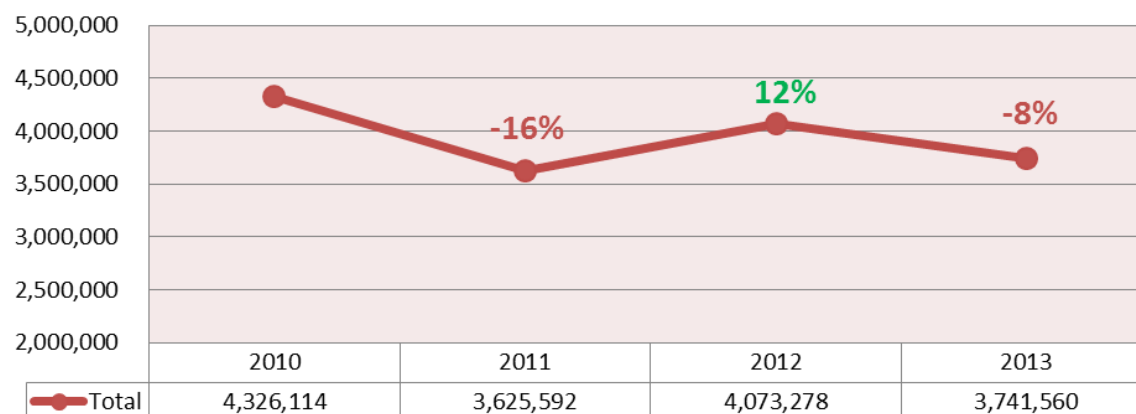
شركة مطار البحرين
bahrain airport company

Snapshots will be sent to our readers on a monthly basis.

Our aim is to constantly keep you updated and informed on key passenger data, trends and highlights for the concerned month.

We hope you find our Snapshots informative as we continue to improve and enhance its content.

**(Jan-Jun) Cumulative Y-O-Y Total PAX
(2010-2013)**



Source: Traffic Movement Sheet, BAS; compilation and analysis by Commercial and Marketing, BAC.

- ✈ June 2013 Total PAX amounted to 635,682.
- ✈ Jan-Jun 2013 Total PAX cumulative amounted to 3,741,560.
- ✈ 2012-2013 (Jan-Jun) Total PAX cumulative witnessed a decline of 8% (or 331,718).
- ✈ 2010-2013 (Jan-Jun) Total PAX cumulative witnessed a decline of 14% (or 584,554).

2012-2013 Total PAX witnessed a decrease of 13% (or 94,600).

The main highlights of the month were:

RUH: -39% (or 17,650) in Total PAX:

- Disembarking: down 37% (or 8,396).
- Joining: down 41% (or 9,008).
- Gulf Air was the main airline contributing to the decline.

KWI: -24% (or 12,646) in Total PAX:

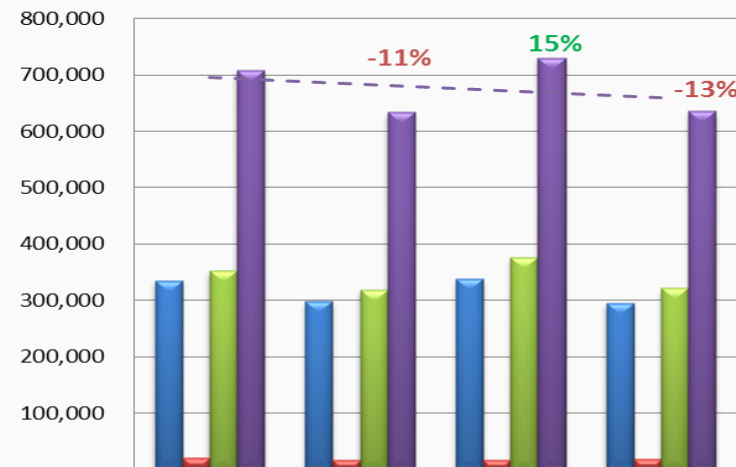
- Disembarking: down 31% (or 10,322).
- Joining: down 11% (or 2,310).
- All airlines witnessed a drop for this route; however the main contributor was Gulf Air.

BOM: -25% (or 8,738) in Total PAX:

- Disembarking: down 22% (or 3,543).
- Joining: down 20% (or 3,532).
- Air India Express and Gulf Air both contributed to the decline.

Note: above we focused on commenting on currently scheduled operating airlines. However, it is worth noting that Bahrain Air's closure played a hefty part in these declines.

June PAX Trends (2010-2013)



	2010	2011	2012	2013
Disembarking	335,275	298,579	338,322	295,769
Transit	20,778	16,601	16,776	18,088
Joining	352,335	318,436	375,184	321,825
Total	708,388	633,616	730,282	635,682

Top 10 Airports Rank Displacement (Jan-Jun):

# Airport	2012 Vs. 2013
1 DXB	-
2 DOH	-
3 KWI	-
4 AUH	(1)
5 MCT	(3)
6 RUH	2
7 BOM	1
8 DMM	(3)
9 LHR	2
10 DEL	(3)

Top 10 Airports Growth/Decline (JUN 2012-2013):

Rank	Airport	Total PAX	Airport	Total PAX
1	NJF	6,627	RUH	(17,650)
2	DOH	5,258	KWI	(12,646)
3	DEL	3,492	BOM	(8,738)
4	IAD	3,286	COK	(6,582)
5	MCT	2,979	CMB	(5,455)
6	BGW	2,260	MNL	(5,368)
7	AMS	1,595	TRV	(5,173)
8	AMM	1,575	CAI	(4,120)
9	BEY	1,156	KHI	(3,597)
10	SHJ	1,143	DMM	(3,194)